

WEST SHORE LAKE PONTCHARTRAIN STAKEHOLDER UPDATE

November 2024

L. Jeff Williams
Senior Project Manager, WSLP
New Orleans District
U.S. Army Corps of Engineers



US Army Corps
of Engineers®



AGENDA

- Resiliency Study Schedule
- Construction Status
- Pre-Construction Status
- Construction Photos
- Tentative Delivery Plan & Design Status
- Maps

<https://www.mvn.usace.army.mil/About/Projects/West-Shore-Lake-Pontchartrain/>



RESILIENCY STUDY SCHEDULE

- The Senior Leader Panel to review the VTAM schedule was 22 October
- The next Senior Leader Panel will be 6 December

Milestone	3x3 Study Schedule	Standard Duration	Additional Time Requested	VTAM Schedule
Feasibility Cost Sharing Agreement (FCSA)	28 February 2023	0 months	0 months	28 February 2023
Alternatives Milestone Meeting (AMM)	28 May 2023	3 months	2 months	14 July 2023
Tentatively Selected Plan (TSP)	28 February 2024	9 months	19 months	14 November 2025
Draft Report for Public Review	28 April 2024	2 months	2 months	13 March 2026
Agency Decision Milestone (ADM)	28 September 2024	5 months	2 months	14 October 2026
Division Commander's Endorsement of Final Report	28 August 2025	11 months	6 months	14 March 2028
Chief's Report Milestone	28 February 2026	6 months	0 months	14 September 2028
Total Duration	--	3 years	--	5 years, 7 months



CONSTRUCTION STATUS

- WSLP-110 contract was awarded on 21 Dec 22
 - 98% Scheduled; 98% Completed
- WSLP-107 contract was awarded on 15 Mar 23
 - 61% Scheduled; 59% Completed
- WSLP-101a contract was awarded on 28 April 23
 - 53% Scheduled; 51% Completed
- WSLP-108 contract was awarded on 25 August 23
 - 33% Scheduled; 41% Completed
- WSLP-104 contract was awarded on 25 August 23
 - 25% Scheduled; 26% Completed
- WSLP-106 contract was awarded on 9 September 23
 - 49% Scheduled; 49% Completed



CONSTRUCTION STATUS

- WSLP-102 contract was awarded on 14 September 23
 - 30% Scheduled; 31% Completed
- WSLP-105 contract was awarded on 22 September 23
 - 28% Scheduled; 29% Completed
- WSLP-103 contract was awarded on 21 May 24
 - 11% Scheduled; 9% Completed
- WSLP-114a contract was awarded on 23 September 24
 - 1% Scheduled; 1% Completed
- WSLP-109 contract was awarded on 25 September 24
 - Mobilizing this month
- Pile Load Test Complete



CONSTRUCTION COMMUNITY CONCERNS

Garyville Flooding Assessment

- Modeling shows no link between WSLP construction and Garyville flooding.
- Additional verification using Hurricane Francine data is underway.

Community and Stakeholder Engagement

- Issues tied to railroad culvert maintenance highlighted at recent public meeting.
- St. John Parish is assessing culverts to address maintenance accountability.

WSLP Mitigation

- Includes canals, culverts, and drainage structures to manage interior drainage.
- Construction ensures no induced flooding and maintains gravity drainage.

Ongoing Collaboration

- Clear culverts and adherence to plans required during construction.
- USACE committed to working with stakeholders to address concerns.



PRE-CONSTRUCTION STATUS

- **WSLP-114: Major Pump Stations and Drainage Structures**

- Current Status: 95% P&S Complete
- Contract Advertised: March 2025
- Contract Award: June 2025

- **WSLP-103a: Frenier Floodgates**

- Current Status: 35% P&S Complete
- Contract Advertised: September 2025
- Contract Award: November 2025

- **WSLP-110a: Air Products T-Wall**

- Current Status: 35% P&S Complete
- Contract Advertised: October 2025
- Contract Award: December 2025

CONSTRUCTION PHOTOS



US Army Corps
of Engineers®

WSLP-110 Construction Progress

CONSTRUCTION PHOTOS



WSLP-107 Construction



U.S. ARMY



US Army Corps
of Engineers®

CONSTRUCTION PHOTOS



WSLP-106 Construction



US Army Corps
of Engineers®

U.S. ARMY

CONSTRUCTION PHOTOS



WSLP-102 Construction



US Army Corps
of Engineers®

U.S. ARMY

CONSTRUCTION PHOTOS



WSLP-108 Construction



US Army Corps
of Engineers®

U.S. ARMY



U.S. ARMY

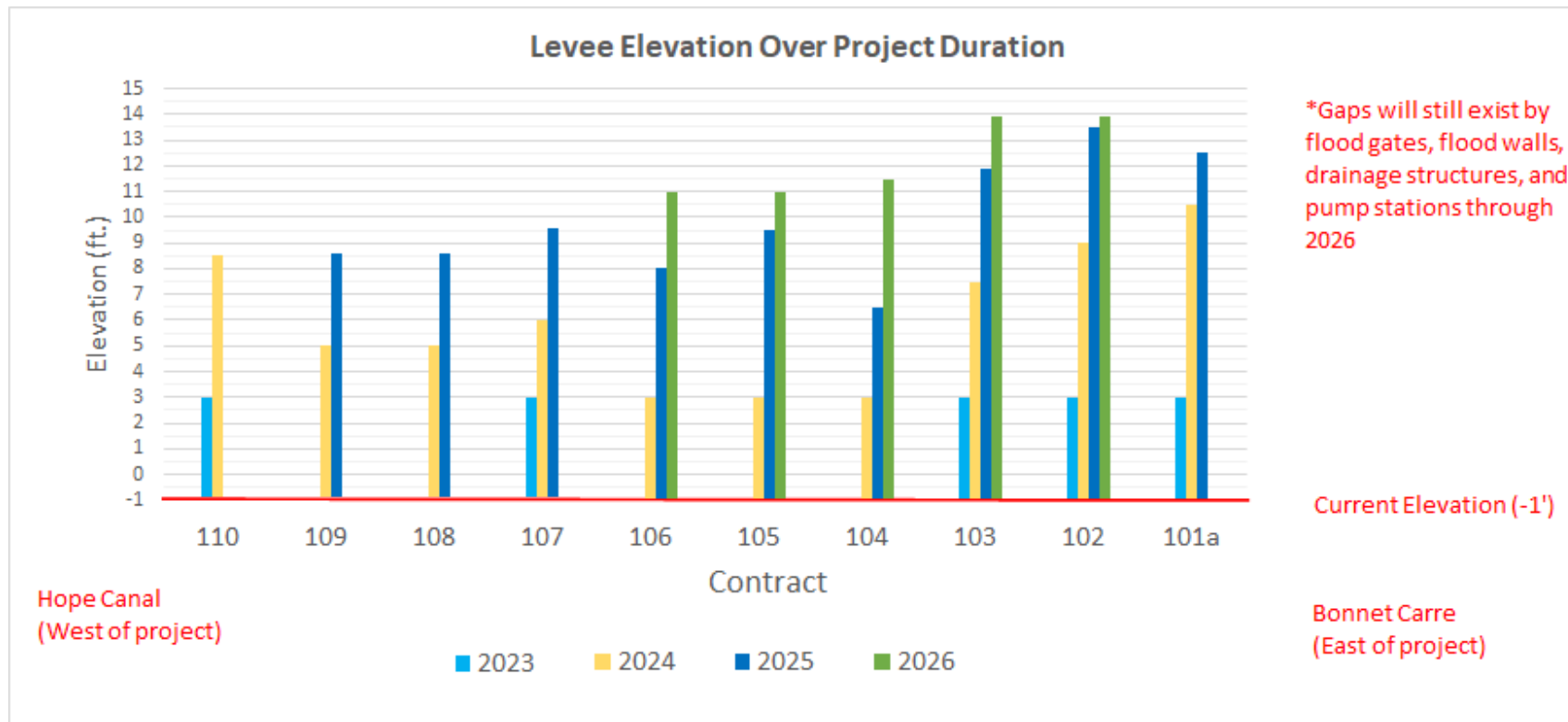


US Army Corps
of Engineers®

PRELIMINARY LEVEE CONSTRUCTION SCHEDULE

13

- Existing elevation approx. -1 feet
- 2023 and 2024: Construct 3-foot sand base and begin levee construction
- 2024: Levee built to heights around +6 feet
- 2025: Levee built to heights ranging +6.6 to +12.5 feet
- 2026: Levee built to full heights



WEST SHORE LAKE PONTCHARTRAIN TENTATIVE DELIVERY PLAN

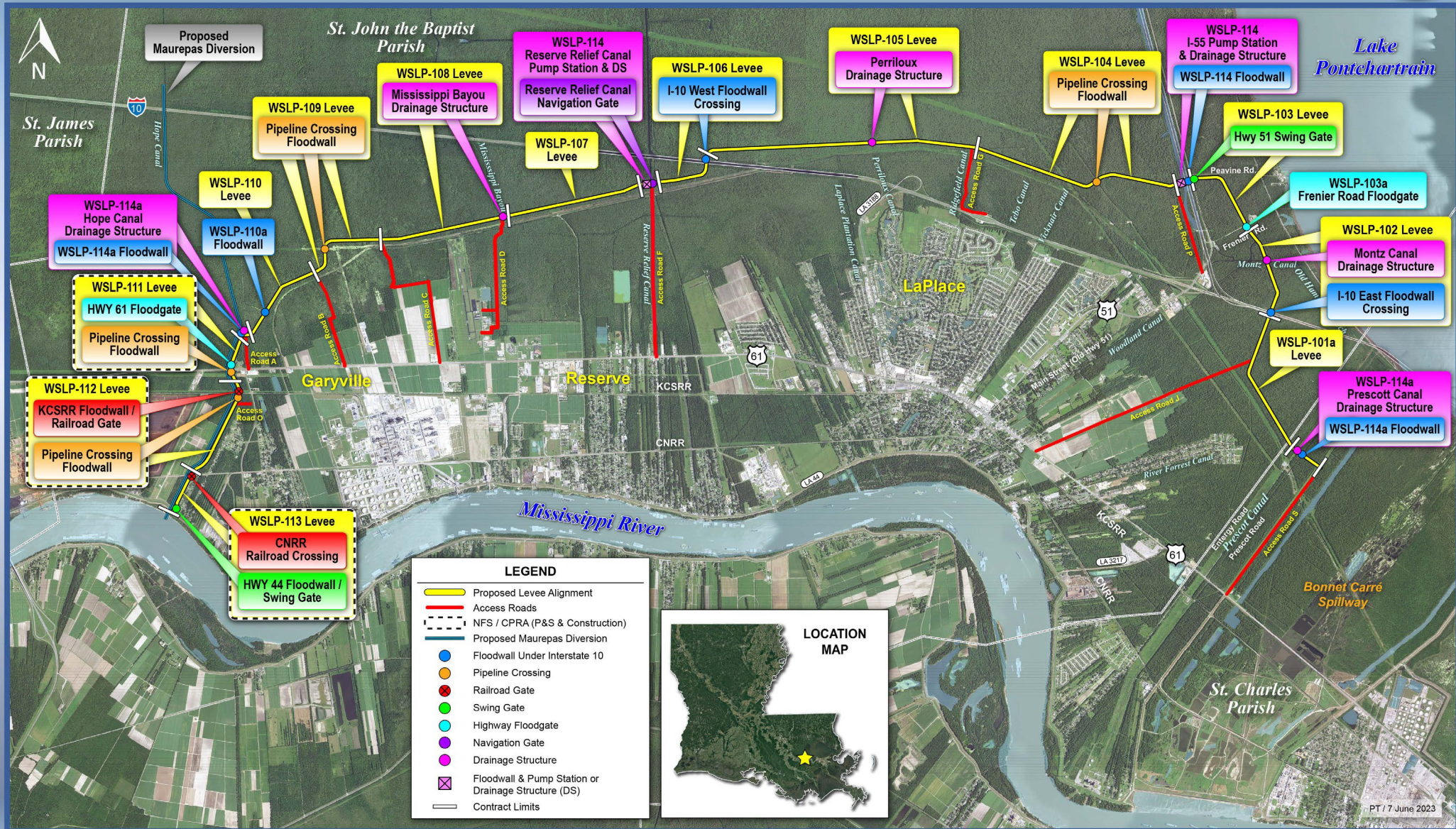
Contract ID	Description	Award
WSLP 114	Pump Stations (2 – 2,000 cfs)	June 2025
WSLP 103a	Frenier Floodgates	November 2025
WSLP 110a	Air Products T-Wall	December 2025
WSLP 111**	Levee (approx. 0.5 mi), Highway Ramp, Utility Crossings	July 2026
WSLP 112**	Levee (approx. 1.0 mi), Railroad Gate, Floodwall (approx. 500 ft), Utility Crossings	December 2025
WSLP 113**	Levee (approx. 0.5 mi), Floodwall (approx. 500 ft), Railroad Gate	May 2026

Note: Project requirements and completion dates may be subject to change as designs are refined and impacts quantified.

**Designed and constructed by CPRA



West Shore Lake Pontchartrain



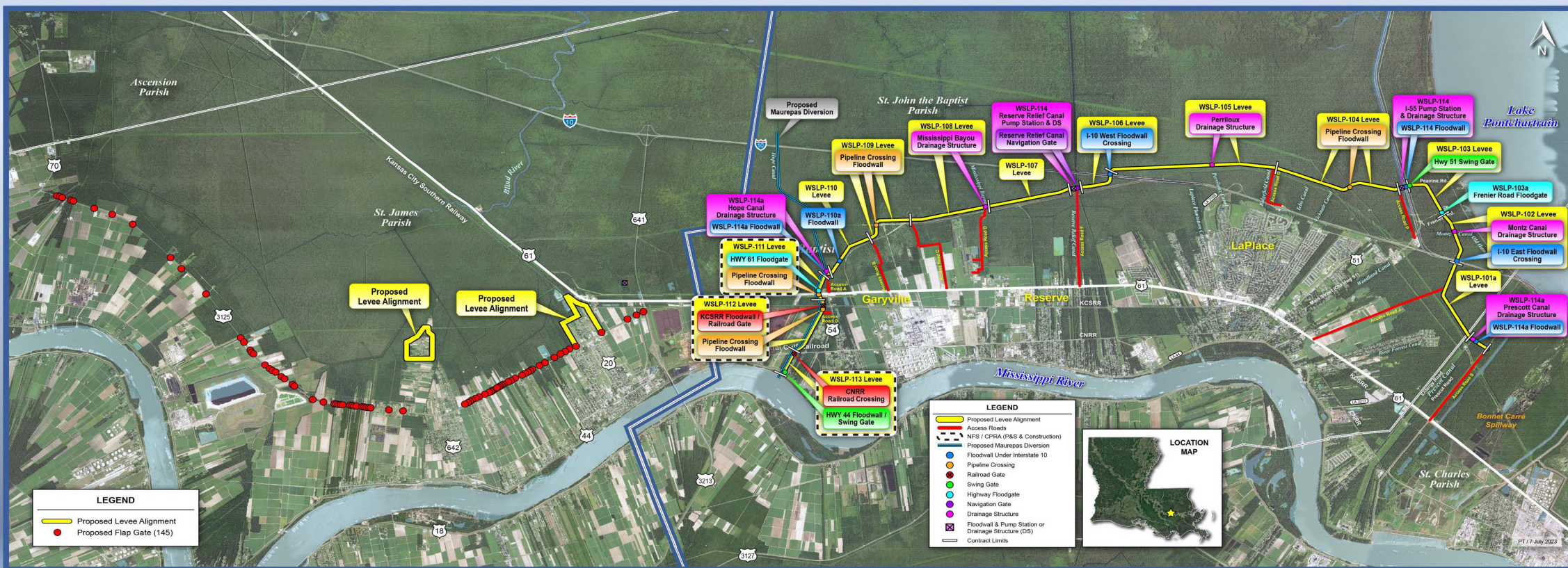


West Shore Lake Pontchartrain



St. James Parish Alignment

St. John Parish Alignment



Questions



US Army Corps
of Engineers®

U.S. ARMY